

Cynomolgus ITPRIPL1 Protein; His Tag

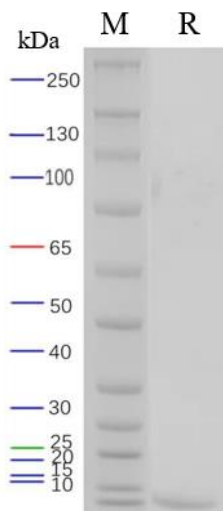
Product Information

Product Name	Cynomolgus ITPRIPL1 Protein; His Tag
Storage temp.	Store at $\leq -70^{\circ}\text{C}$, stable for 6 months after receipt. Recommend to aliquot the protein into smaller quantities for optimal storage. Please minimize freeze-thaw cycles.
Catalog# / Size	GM-87668RP-100 / 100 μg GM-87668RP-1000 / 1 mg

Protein Information

Alternative Names	ITPRIP like 1; ITPRIPL1; KIAA1754L; CD3L1
Source	Cynomolgus ITPRIPL1 Protein; His Tag (GM-87668RP) is expressed from human 293 cells (HEK-293). It contains AA His 25 - Gly 103 (Accession # F7A9W2). This protein carries a His tag at the C-terminus.
Purity	> 95% as determined by SDS-PAGE
Endotoxin	< 1 EU/ μg , determined by LAL gel clotting assay
Predicted Mol Mass	9.4 KDa
Formulation	Supplied as a 0.2 μm filtered solution of PBS, pH7.4.
Description	<p>ITPRIP like 1 (Inositol 1,4,5-trisphosphate receptor interacting protein-like 1) protein is a protein related to the inositol trisphosphate receptor, which is associated with the release of calcium ions stored within cells. This protein may play a role in regulating the release of calcium ions within cells and has an important role in cell signaling.</p> <p>ITPRIP like 1 protein interacts with the inositol trisphosphate receptor (IP3R) to regulate the release of stored calcium ions within cells. This calcium ion release is an important regulatory process in cell signaling, apoptosis, cell proliferation, and other cellular physiological functions. Therefore, ITPRIP like 1 protein plays a significant role in the regulation of calcium ions within cells.</p> <p>Research suggests that ITPRIP like 1 protein may be closely related to the normal functioning of the nervous system, muscle system, and other tissue organs. Further research will help better understand the mechanism of action of ITPRIP like 1 protein in biological processes, providing new insights and strategies for the treatment and prevention of related diseases.</p>

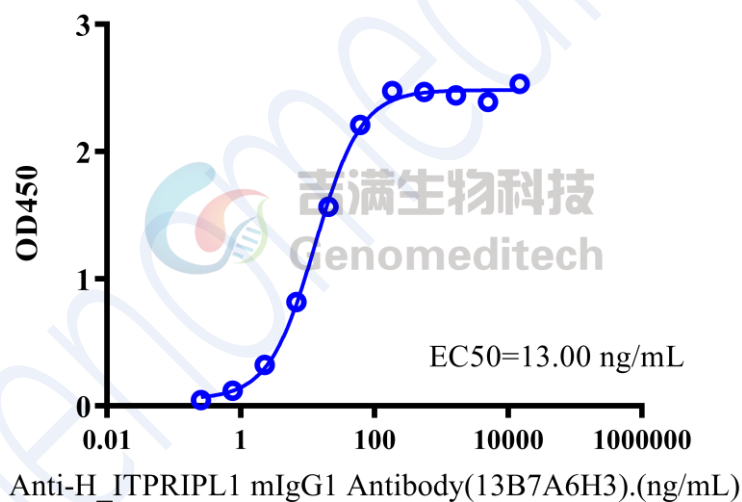
SDS-PAGE



On SDS-PAGE under reducing (R) condition. The gel was stained overnight with Coomassie Blue. The purity of the protein is greater than 95%.

Bioactivity-ELISA

Bioactivity-ELISA
 0.1 μ g Cynomolgus ITPRIPL1 Protein; His Tag of per well



Cynomolgus ITPRIPL1 Protein; His Tag (Catalog # GM-87668RP) was immobilized at 1 μ g/ml (100 μ L/well).
 Increasing concentrations of Anti-H_ITPRIPL1 mIgG1 Antibody(13B7A6H3) (Catalog # GM-87827AB) were added.